

DVS 400DV ROOF FAN

Item number 5711

Description

- Speed-controllable
- Integral thermal contacts
- Low sound level
- Maintenance-free and reliable

The DVS/DHS/DVSI models have impellers with backward curved blades and external rotor motors. All motors are speed controllable over the voltage. Frequency inverters must have an allpole sine filter. The motors are suspended on effective vibration dampers.

DVS/DHS/DVSI ...EZ / EV / ES: 1~ motor with connection for 2-speeds

DVS/DHS/DVSI ...E4: 1-speed motor

DVS/DHS/DVSI ...DV / DS: 3~ with Y/D-connection for 2-speeds

To protect the motors from overheating the DVS/DHS/DVSI up to size 311 have integral thermal contacts, from size 355 with external leads for connection to a motor protection device.

The casing is made from aluminum and the base frame is powder-coated galvanised steel. Suitable for coastal applications. The impellers up to size 355 are manufactured from polyamide PA6 25GV, from size 400 in aluminum.

DVS with outlet vertical

DHS with outlet horizontal

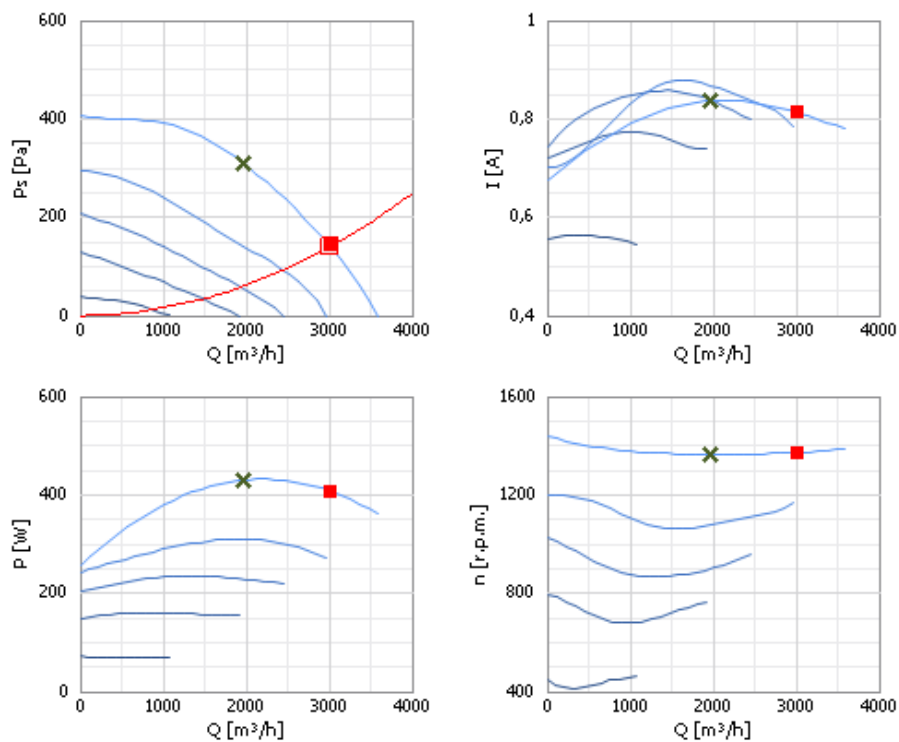
DVSI has a 50 mm mineral wool insulation for low noise level.



Technical parameters

Parameter	Value	Unit
Voltage	400	V
Frequency	50	Hz
Phase	3	~
Power	440	W
Current	0,8	A
Max. airflow	3 800	m ³ /h
R.p.m.	1 350	r.p.m.
Max. temperature of transported air	40	°C
Max. temperature of transported air when speed-controlled	40	°C
Sound pressure level at 4 m	51	dB(A)
Sound pressure level at 10 m	43	dB(A)
Weight	26,5	kg
Insulation class, motor	F	
Enclosure class, motor	54	IP

Diagrams



Max. efficiency data

✕ Working point							
Q [m³/h]	Ps [Pa]	P [W]	n [r.p.m.]	I [A]	U [V]	SFP [kW/m³/s]	E [%]
1975	310	430	1364	0,836	400	0,783	39,6

Product selection data

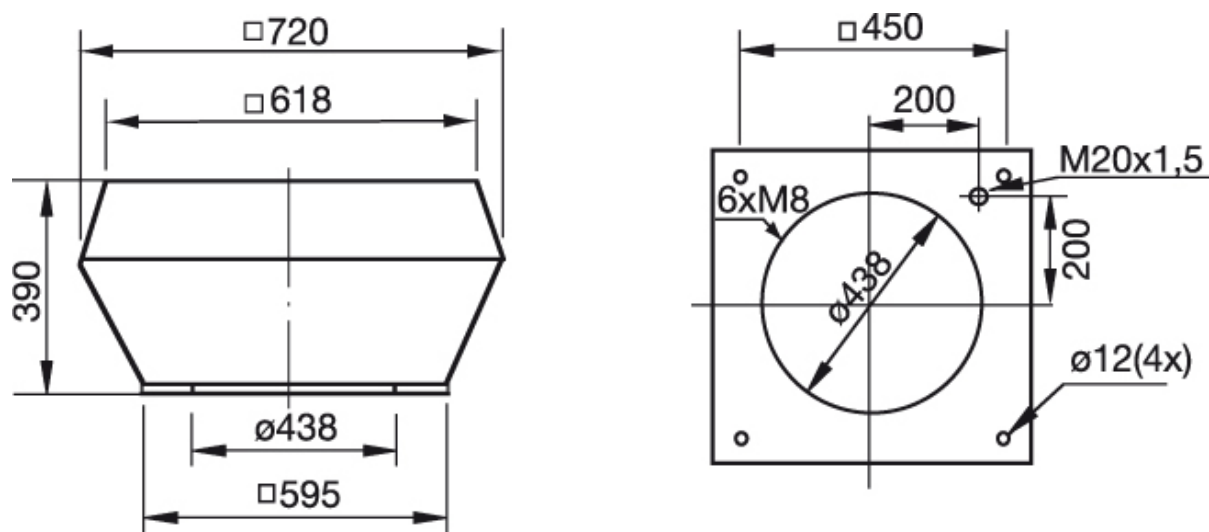
□ Selected point		■ Working point								
Q [m³/h]	Ps [Pa]	Q [m³/h]	Ps [Pa]	P [W]	n [r.p.m.]	I [A]	U [V]	SFP [kW/m³/s]	E [%]	
3000	140	3000	143	408	1372	0,814	400	0,49	29,2	

Acoustics

	dB(A)	Mid-frequency band, Hz								
		Tot	63	125	250	500	1k	2k	4k	8k
LwA Inlet		72	59	61	65	67	66	63	58	51
LwA Surrounding		74	61	63	67	69	68	65	60	53
DVSI										
LwA Surrounding		65	58	58	60	58	52	45	43	37
With SSD 355/400										
LwA Inlet		62	56	56	57	53	47	41	42	36

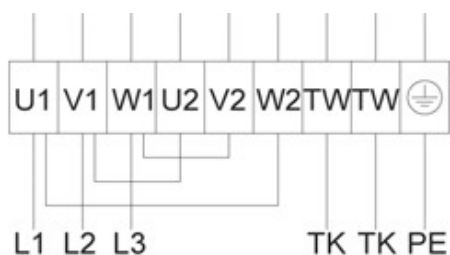
Measuring point: $q_v = 0,67 \text{ m}^3/\text{s}$, $P_s = 300 \text{ Pa}$

Dimensions

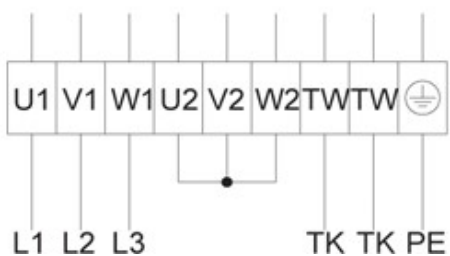


Wiring

Delta connection



Star connection



Accessories

Electric accessories

- REV-5POL/07 switch ON/OFF
- REV-9POL/12 switch ON/OFF
- RTRD 2 Speed Contr. Systemair
- RTRDU 2 Speed contr. Systemair
- S-DT2SKT Two speed switch Y/D
- STDT 16 Motor Protection

Accessories

- ASF 355-500 inlet flange DVS
- ASK 355/400 inflow box SSD
- ASS 355-500 flex. con. DVS
- FDS 355/400 flat roof socket
- FTG 355/400 Tilting device
- SSD 355/400 socket silencer
- TDA DV 355/400 Adapter
- VKM 355-500 Back draft damper
- VKS 355-500 Back draft damper